

Cooling Shredded Foam Pillow



Cover Top & Bottom Fabric: 360GSM, 55% cooling PE, 45% Polyester, Circular Knit, Gray Color

Inner Cover: 150GSM, 92% Polyester, 8% Spandex, jersey knit, white color + 0.5CM memory foam sheet

Inner Pillow Fill: 90% Shredded Foam, 10% Polyester fiber, white approx. 800G

Cover Style/Construction: Knife edge, overlock inside, one short side sewn #3 nylon zipper.

Size: 40x65CM/ 45x70CM

Packing: Roll compressed packing

MOQ: 1000 pcs

Lead Time: 50 Days



Cooling Reversible Charcoal Infused Shredded Foam Pillow

Travesseiro de espuma triturada com infusão de carvão reversível e refrescante



Cover Top Fabric: 350GSM, 55% cooling PE, 45% Polyester, Circular Knit, Gray Color
Cover Bottom Fabric: 300GSM, 30% **charcoal infused fiber**, 70% polyester, grey color

Inner Cover: 150GSM, 92% Polyester, 8% Spandex, jersey knit, white color + 0.5CM memory foam sheet
Inner Pillow Fill: 90% Shredded Foam, 10% Polyester fiber, white approx. 800G
Cover Style/Construction: Knife edge, overlock inside, one short side sewn #3 nylon zipper.

Packing: Roll compressed packing

MOQ: 2000 pcs
Lead Time: 50 Days



Cooling Reversible Shredded Foam Pillow /Travesseiro de espuma triturada reversível e refrescante



Outer Cover Top Fabric: 300GSM, **40% Cooling PE**, 60% Polyester, Circular Knit, Jacquard pattern as attached, white/blue two tone

Outer Cover Bottom Fabric: 300GSM, **37% Bamboo**, 63% Polyester, Circular knit, Jacquard Pattern as attached, white color

Inner Cover Top & Bottom: 75GSM, 100% Polyester, microfiber, white

Inner Pillow Filling: 1100G, Shredded foam, gel infused, blue

Outer Cover Style: Knife ege, overlock inside, one short side sewn #3 nylon zipper

Inner Pillow Style: Knife ege, overlock inside, one short side sewn #3 nylon zipper

Packing: Roll Compressed packing into poly bag, then into a brown box, 9 pcs per master carton

MOQ: 2,000 pcs

Lead Time: 50 Days



Down & Fiber Filled Pleated Pillows



Fabric: 233TC, 100% Cotton, Plain, downproof, white 40x40/133x100

Top Fill: 200G, 50% White duck down

Outer Cover Style/Construction: Golded rope Piping on all sides, Gusset, top pinch pleated, one short side sewn with zipper

Inner Pillow: Knife edge.

Inner Pillow Fill: 740G polyester fiber

Packing: PVC bag with 1 printed insert card(can be compressed packing) or customized

MOQ: 1000 pcs

Lead Time: 55 Days



Down Alternative Fiber Filled Pinch Pleated Pillows



Fabric: 233TC, 100% Cotton, Plain, downproof, white 40x40/133x100

Top Fill: 350G, Polyester blown fiber

Outer Cover Style/Construction: Golded rope Piping on all sides, Gusset, top pinch pleated, one short side sewn with zipper

Inner Pillow: Knife edge.

Inner Pillow Fill: **700G polyester fiber**

Packing: PVC bag with 1 printed insert card(can be compressed packing) or customized

MOQ: 1000 pcs

Lead Time: 55 Days



Super Soft Luxury Cotton Quilted Gusset Bio-Based Foam Pillow



Outer Cover Top & Bottom Fabric: 233TC, 100% Cotton, Plain, downproof, white 40x40/133x100 + Fill: 200GSM polyester fiber + 90GSM Knit white, three layers 4x4" diamond quilt.

Outer Cover Gusset: 200GSM, 100% Polyester, Sanwich Mesh Knit, white

Inner Cover Fabric: 90GSM Knit white,

Inner Pillow: **Bio-based Foam, 1800G**

Cover Style/Construction: 1/8" piping on all sides, 5CM gusset, overlock inside, one long side centred sewn #4 nylon zipper
Inner pillow: Knife edge

Packing: Vinyl bag with 1 insert card, 4 pcs per carton

MOQ: 5000 pcs

Lead Time: 45 Days



Zoned Pillow



Cover Top Fabric: 170GSM, 85% Cooling Nylon, 15% Spandex, Birdeye Knit white, + Lining: 190GSM, 100% Polyester, Knit with Hexagon Pattern TPE

Tecido da capa superior: 170GSM, 85% Nylon refrescante, 15% Elastano, malha Birdeye branca, + Forro: 190GSM, 100% Poliéster, malha com padrão hexagonal TPE

Cover Bottom & Gusset: 190GSM, 100% Polyester, Knit, white
Parte inferior da capa e reforço: 190 GSM, 100% poliéster, malha, branco

Inner Cover: Memory Foam Pillow 850G

Packaging: Rolled into a printed inner carton box, then put into a outer carton/master carton
Embalagem: Enrolado em uma caixa de papelão interna impressa e, em seguida, colocado em uma caixa externa/caixa mestra

MOQ: 500 pcs

Size: **60x35x7/11CM**



Ventilated Memory Foam Pillow



Outer Cover Fabric: 250GSM, **40% Bamboo**, 60% Polyester, Circular Knit, White
Tecido de cobertura externa: 250 g/m², 40% bambu, 60% poliéster, malha circular, branco
Inner Pillow: 800G memory Foam, Ventilated

Cover Style/Construction: Knife edge, "U" shaped zipper

Packaging: Rolled into a printed inner carton box, then put into a outer carton/master carton
Embalagem: Enrolado em uma caixa de papelão interna impressa e, em seguida, colocado em uma caixa externa/caixa mestra

MOQ: 1000 pcs

Lead Time: 50 Days



Cooling Memory Foam Pillow



DUAL Layered Air Foam Pillow 60x40x12CM



Layered Core, Non Removable, No Inner Cover,
Top 38D Gel Infused Air Foam, Bottom 38D white Air Foam

Outer Cover Fabric: 170GSM 90% Nylon, 10% Spandex, Jersey Knit, white color

Capa externa superior e inferior: 170GSM, 90% nylon refrescante, 10% elastano, malha jacquard, branco

No piping, Knife edge, overlock inside, "U" shaped zipper

Packaging: Rolled into a printed inner carton box, then put into a outer carton/master carton

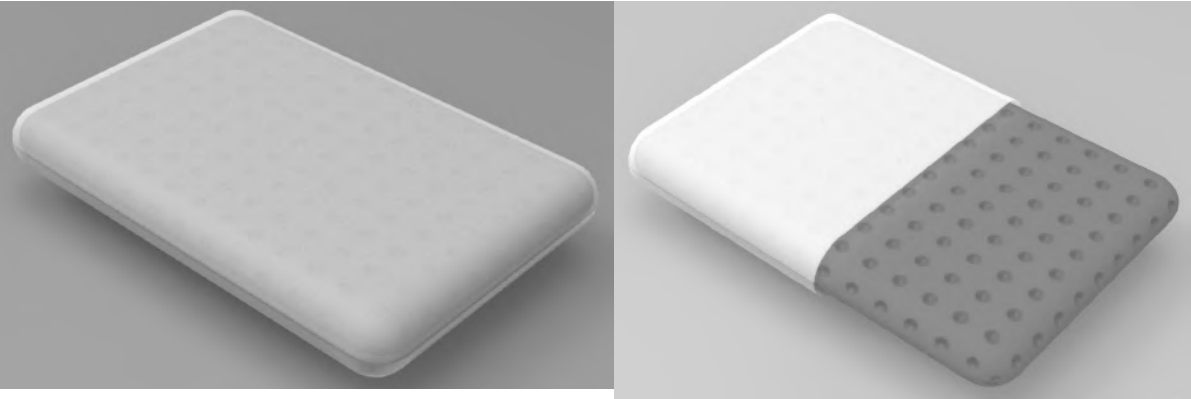
Embalagem: Enrolado em uma caixa de papelão interna impressa e, em seguida, colocado em uma caixa externa/caixa mestra



Orthopedic Memory Foam Pillow

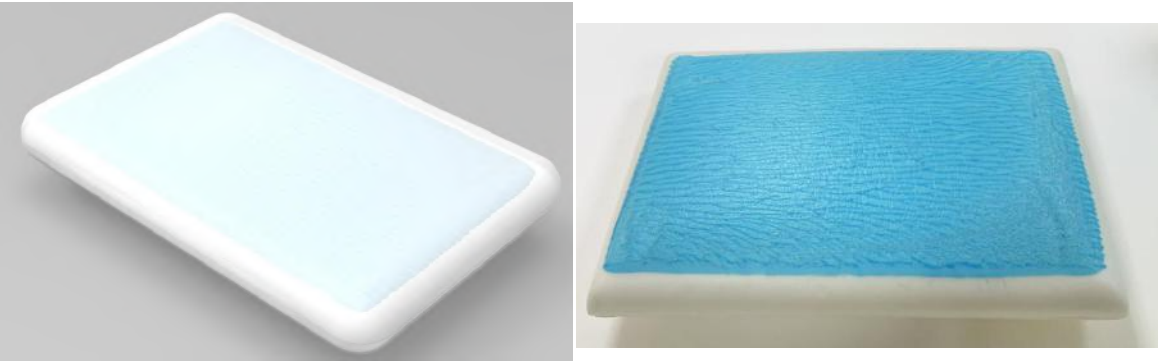


Cooling Charcoal Infused Ventilated Memory Foam Pillows
Travesseiros de espuma viscoelástica ventilada com infusão de carvão refrescante



- Outer Cover Top & Bottom: 170GSM, 90% Cooling Nylon, 10% spandex, Jacquard Knit, white
- **Capa externa superior e inferior: 170GSM, 90% nylon refrescante, 10% elastano, malha jacquard, branco**
- Piping: 100% Polyester, Matte Satin, blue color 277C
- **Memory Foam Core: 35x55x12CM Charcoal infused Memory Foam 700G, ventilated, No Inner Cover,**
- **Cover Style/Construction: Knife edge, overlock inside, round corners, “U” shaped zipper**
- **MOQ: 2000 pcs**
- **Lead Time: 50 Days**

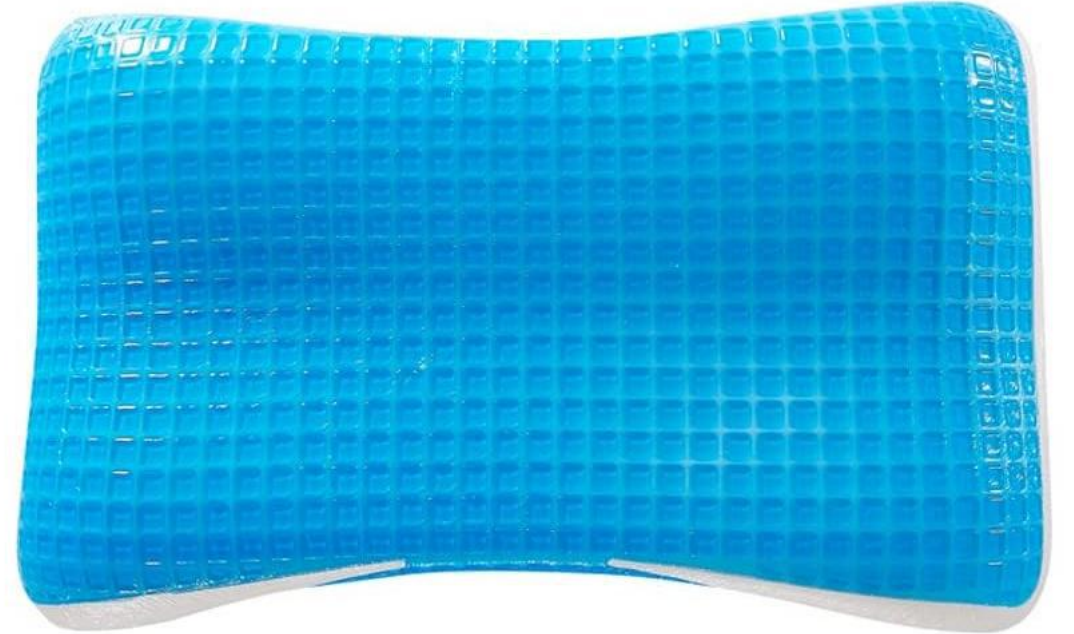
Cooling PCM Coated Memory Foam Pillows
Travesseiros de espuma viscoelástica com revestimento de PCM refrescante



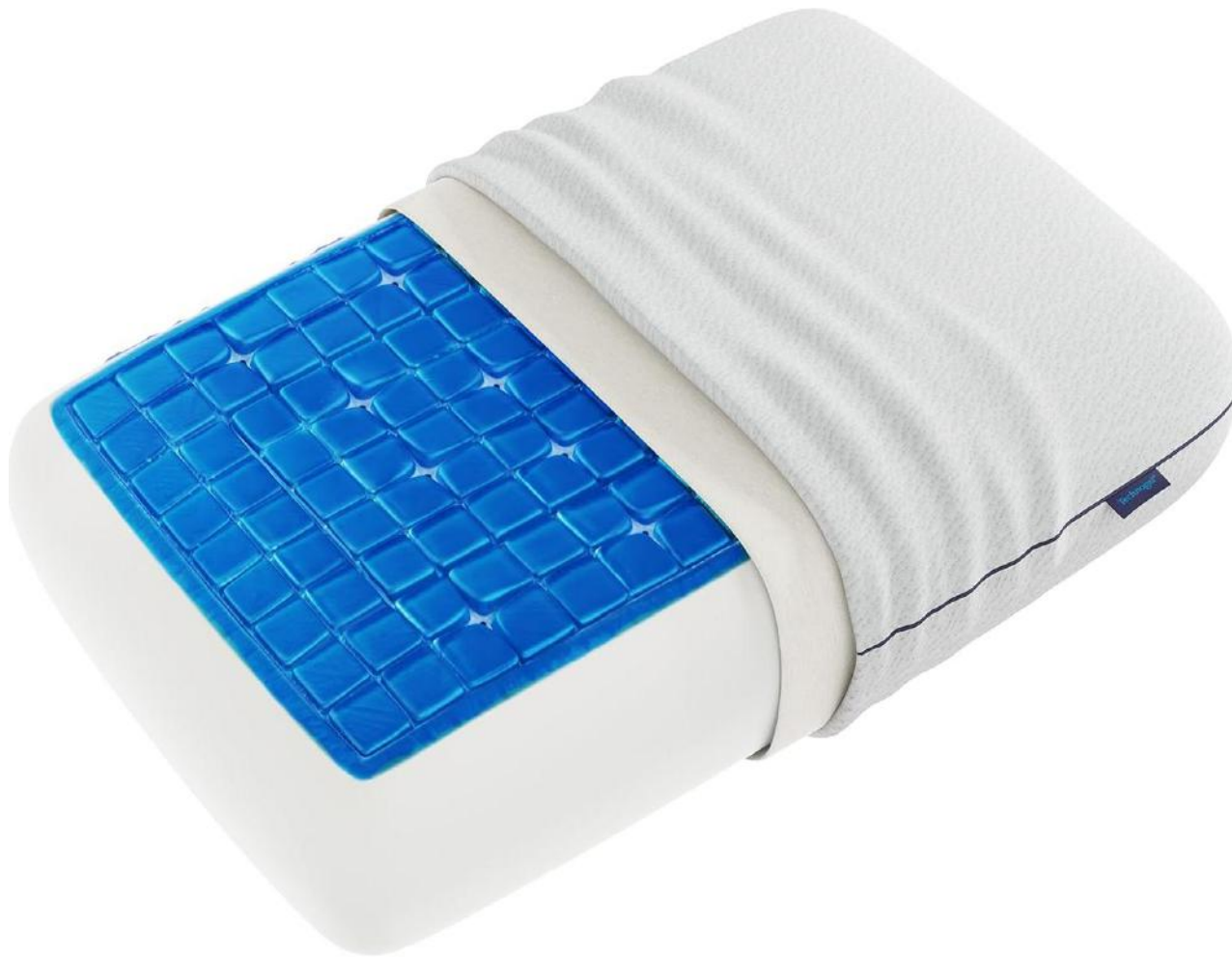
- Outer Cover Top & Bottom: 170GSM, 90% Cooling Nylon, 10% spandex, Jacquard Knit, white
- **Capa externa superior e inferior: 170GSM, 90% nylon refrescante, 10% elastano, malha jacquard, branco**
- Piping: 100% Polyester, Matte Satin, blue color 277C
- **Memory Foam Core: 35x55x12CM White Memory Foam 700G, No Inner Cover, PCM Coating**
- **Cover Style/Construction: Knife edge, overlock inside, round corners, “U” shaped zipper**
- **Packaging: Rolled into a printed inner carton box, then put into a outer carton/master carton**
- **Embalagem: Enrolado em uma caixa de papelão interna impressa e, em seguida, colocado em uma caixa externa/caixa mestra**
- **MOQ: 2000 pcs**
- **Lead Time: 50 -55 Days**



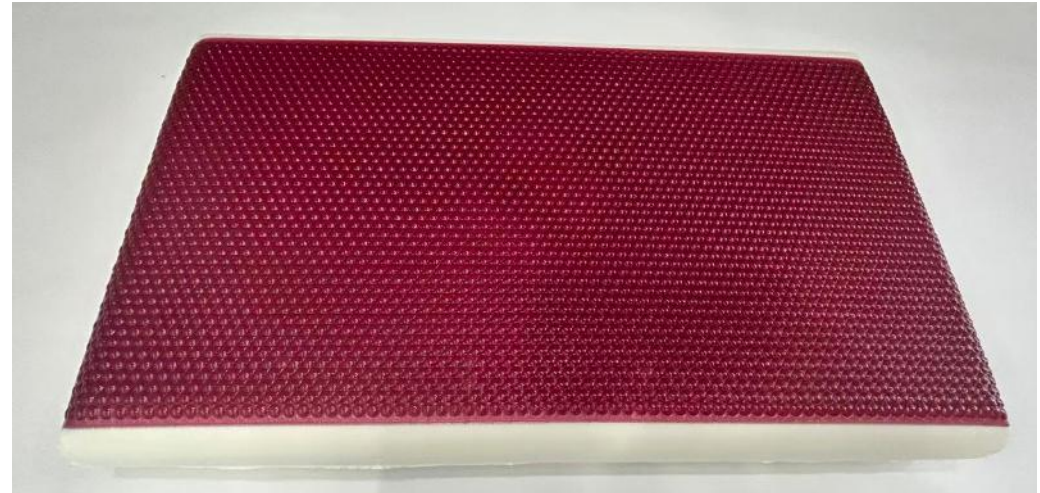
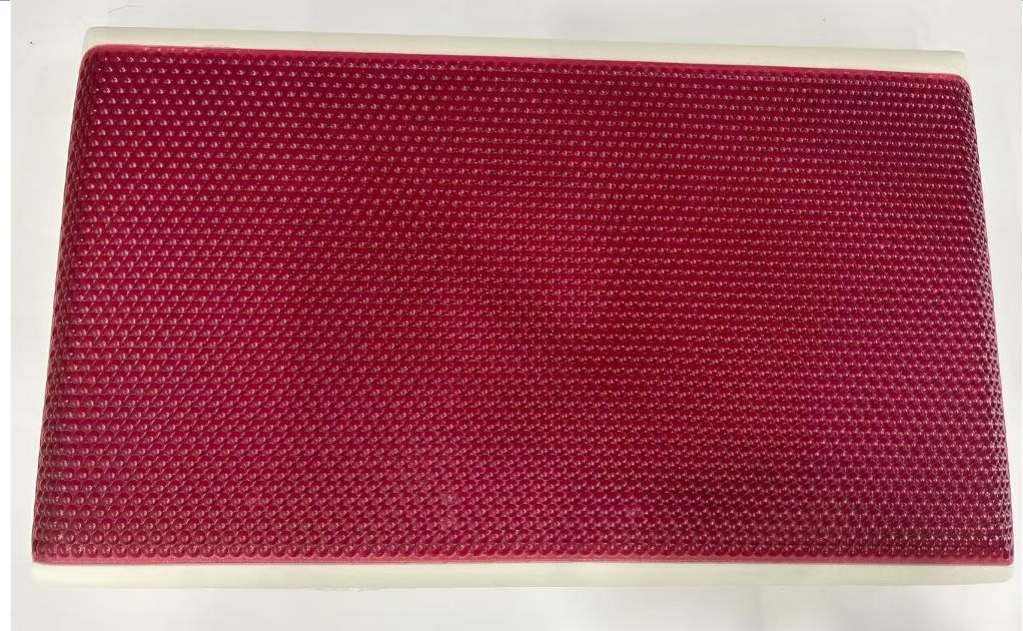
Cooling Gel Memory Foam Pillow



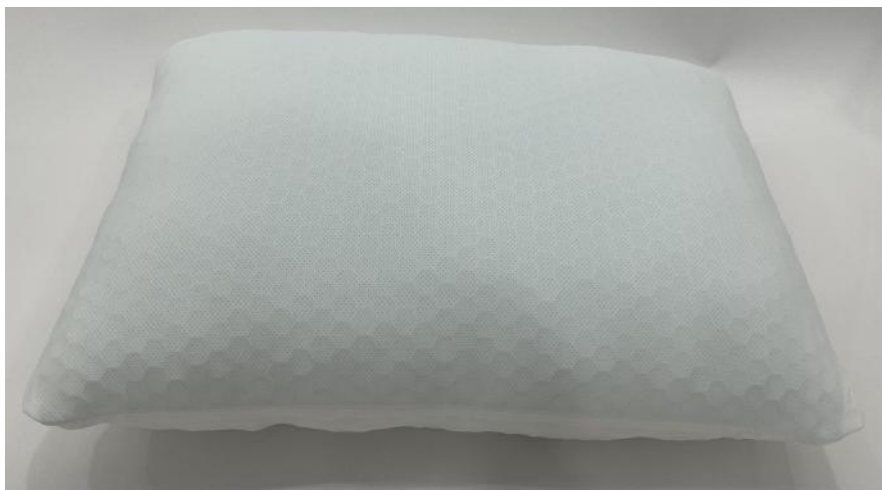
Cooling Gel Memory Foam Pillow



Cooling Gel Memory Foam Pillow



TPE Shredded Memory Foam Pillow--60x40x12CM



Outer Cover Top: 85% Cooling Nylon, 15% Spandex, Birdeye Knit, white +with Hexagon Pattern TPE

Outer Cover bottom: 85% Cooling Nylon, 15% Spandex, Birdeye Knit, white, NO TPE

Inner Memory pillow: 1000G, Memory Foam, white

Packaging: Memory foam pillow rolled and the Cover seperately placed into a printed inner carton box, then put into a outer carton/master carton

MOQ: 1000 pcs

Size: 60x40x12CM

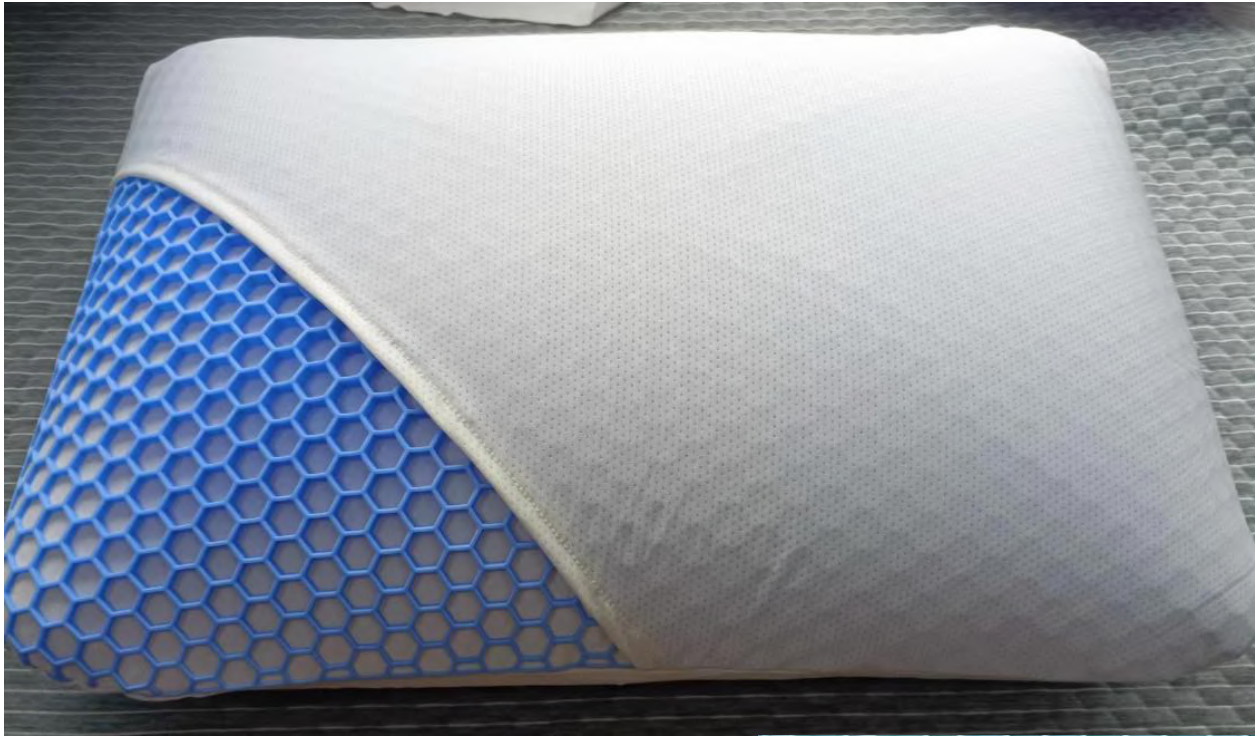
Lead Time: 50 Days



packaging reference only



TPE Memory Foam Pillow 60x40x12CM



Outer Cover Top: 85% Cooling Nylon, 15% Spandex, Birdeye Knit, white +with Hexagon Pattern TPE

Outer Cover bottom: 85% Cooling Nylon, 15% Spandex, Birdeye Knit, white, NO TPE

Inner Cover Fabric Base: 190GSM, 100% Polyester with Hexagon Pattern TPE

Inner Pillow: Memory Foam Pillow approx. 1000G

Packing: Roll Packed into a printed box.

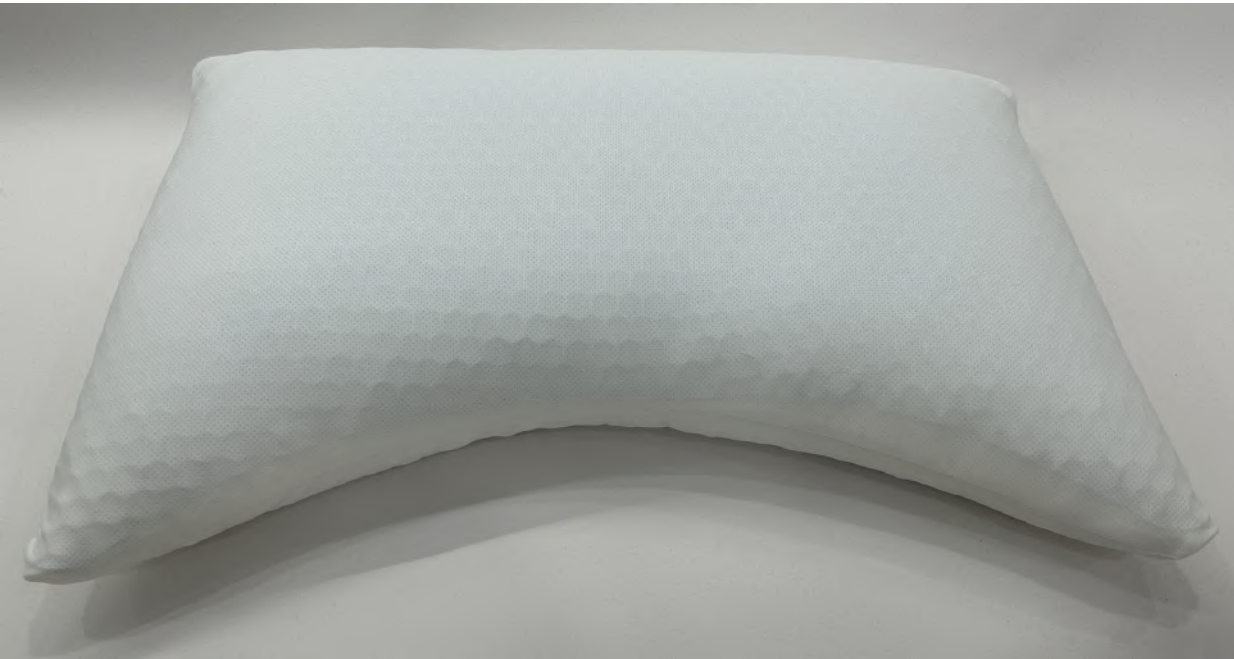
MOQ: 1000 pcs

Size: **60x40x12CM**

Lead Time: 50 Days



SY102: TPE Moon Shapped Shredded Foam Pillow / TIPO Travesseiro de espuma triturada em formato de lua



Outer Cover Top: 85% Cooling Nylon, 15% Spandex, Birdeye Knit, white +with Hexagon Pattern TPE

Outer Cover bottom: 85% Cooling Nylon, 15% Spandex, Birdeye Knit, white, NO TPE

Inner Cover Fabric: 190GSM, 100% Polyester

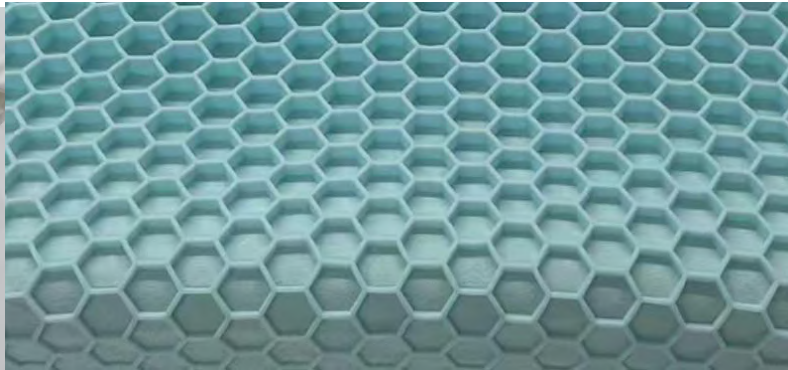
Inner pillow: Shredded Foam + Polyester Fiber 1000G

Packaging: Rolled into a printed inner carton box, then put into a outer carton/master carton

MOQ: 1000 pcs

Size: 75x50x14CM

Lead Time: 50 Days



TPE Memory Foam Contour Pillow 60x35x8/10CM



Cover Fabric Base: 190GSM, 100% Polyester with Hexagon Pattern TPE

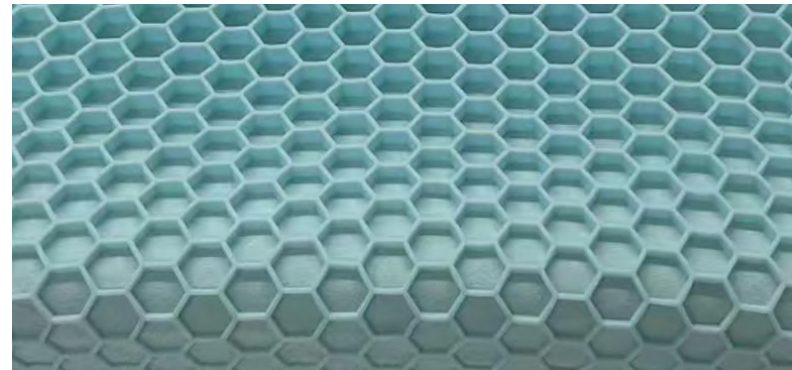
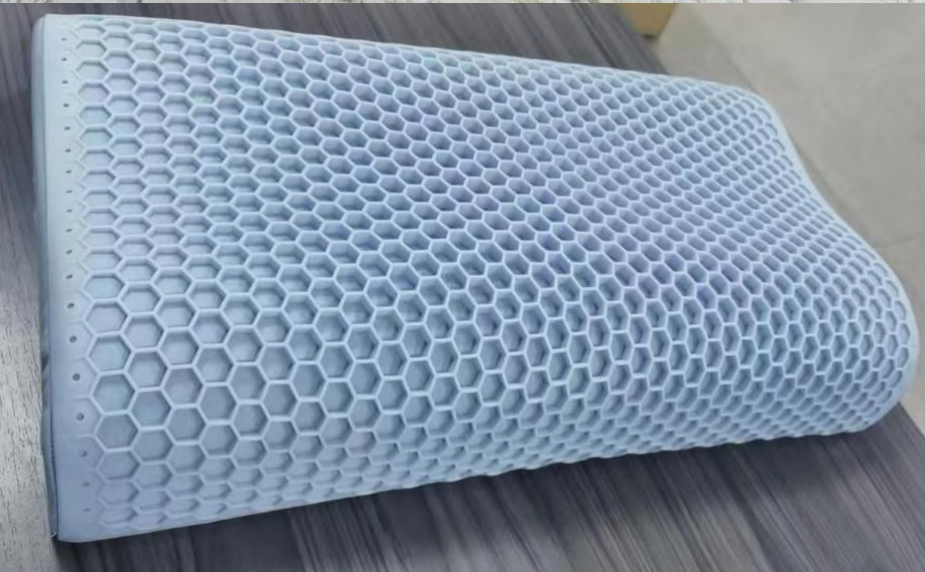
Inner Cover: Memory Foam Pillow approx. 850G

Packing: Roll Packed into a printed box.

MOQ: 1000 pcs

Size: **60x35x8/10CM**

Lead Time: 50 Days



TPE Memory Foam Pillow 65x38x10CM



Inner Cover Fabric Base: 190GSM,100% Polyester, Knit with Hexagon Pattern TPE

Inner Pillow: Memory Foam Pillow approx. 950G

Packing: Roll Packed into a printed box.

MOQ: 1000 pcs

Size: **65x38x10CM**

Lead Time: 50 Days



TPE Memory Foam Pillow **60x35x7/11CM** -TPE color can be customized



Cover Fabric Base: 190GSM, 100% Polyester, Knit with Hexagon Pattern TPE

Inner Pillow: Memory Foam Pillow 850G

Packing: Roll Packed into a printed box.

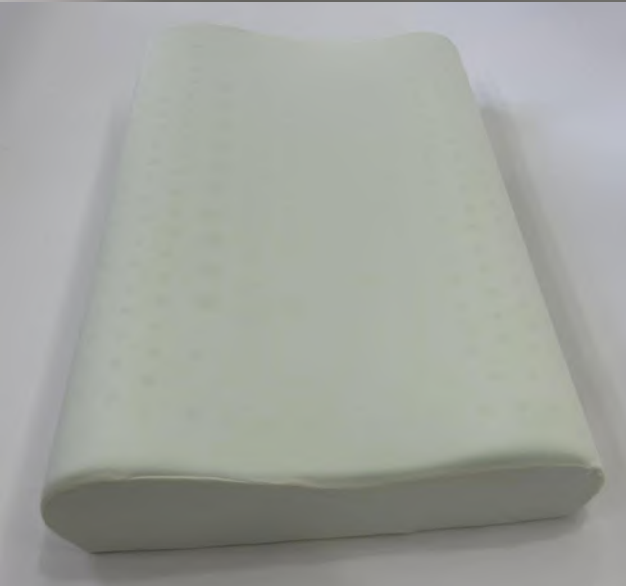
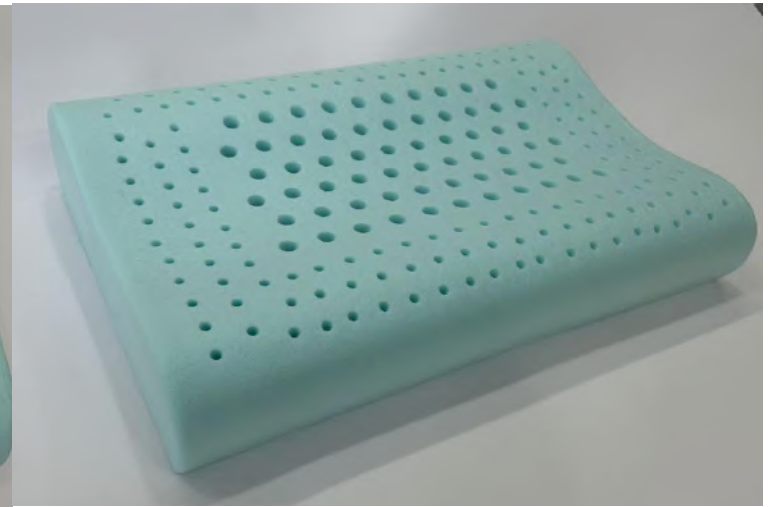
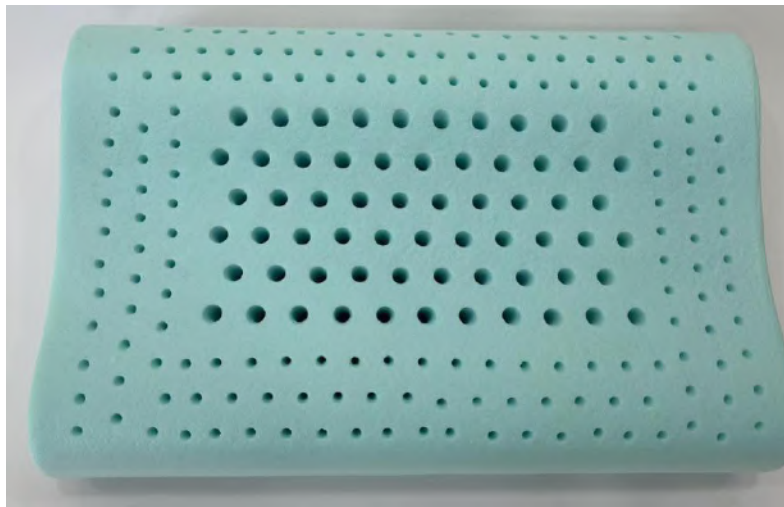
MOQ: 1000 pcs

Size: **60x35x7/11CM**

Lead Time: 50 Days



Cooling Zoned Ventilated Contour Memory Foam Pillow



Iner Foam Core: 1000G, 40D, Memory Foam, blue gel infused, blue color,Zoned ventilation

Outer Cover Style: Knife edge, overlock inside, "L" shapped zipper as attached, Dark blue zipper tape 2145C, Color can be customized.

Packaging: Rolled into a printed inner carton box, then put into a outer carton/master carton

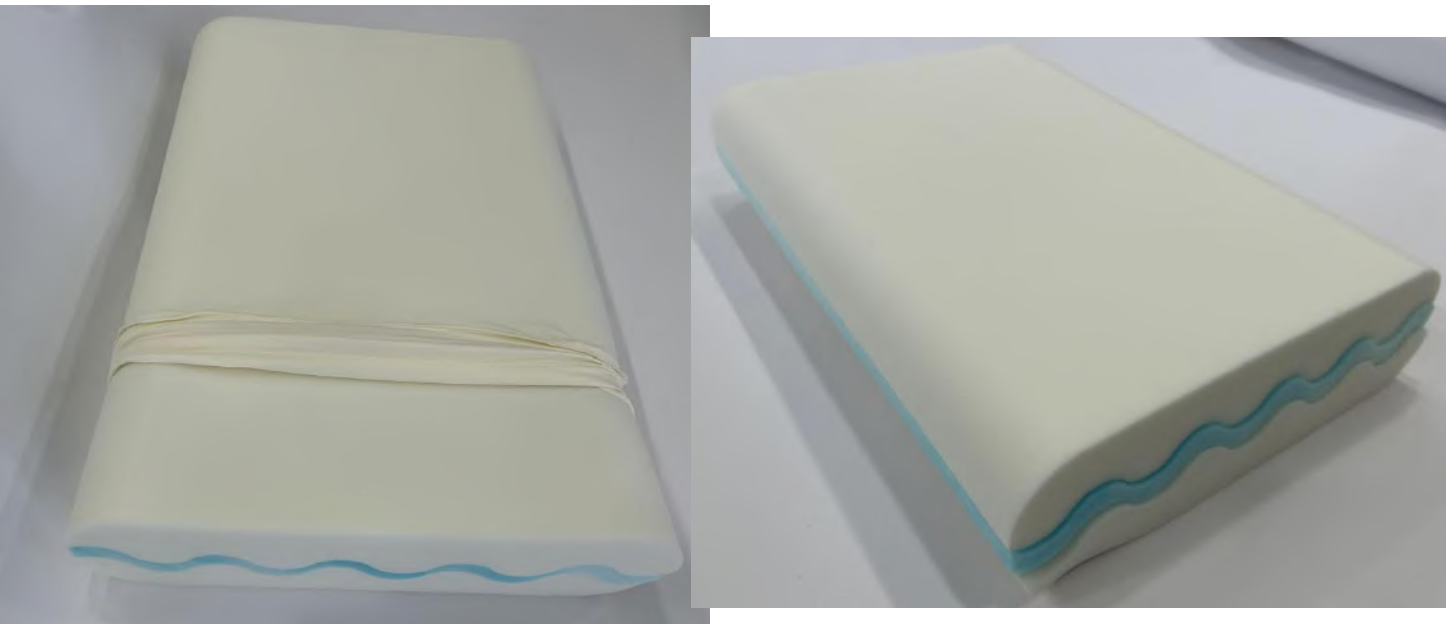
Embalagem: Enrolado em uma caixa de papelão interna impressa e, em seguida, colocado em uma caixa externa/caixa mestra

MOQ: 2000 pcs

Lead Time: 50-55 Days.



Three LAYERED SUPPORT Air Foam Pillow 60x40x12CM



3-Layered Core, Removable

Outer Cover Fabric: 170GSM 90% Nylon, 10% Spandex, Jersey Knit, white color

Pillow Core: Top and bottom white 38D Air Foam, center layer **Gel Infused regular Foam** 25D, 1.1kg/pc, Inner Cover made by 65gsm polyester knit fabric

Knife edge, overlock inside, No piping, "U" Shapped zipper

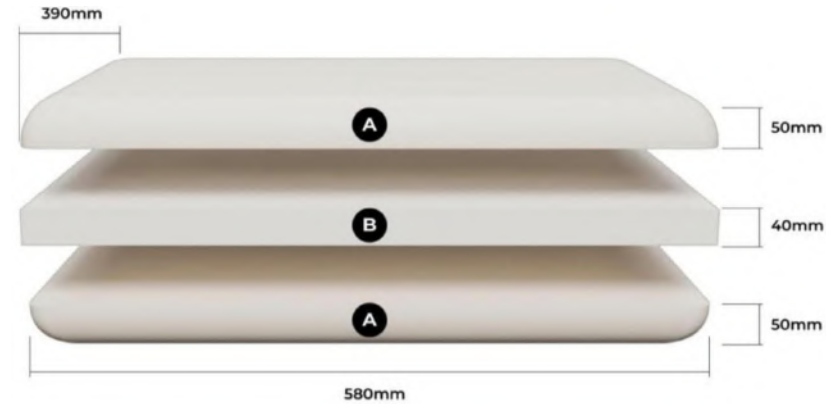
MOQ: 1000 pcs

Lead time: 50 days

Packaging: Rolled into a printed inner carton box, then put into a outer carton/master carton



Adjustable Bio-Based Foam Pillow



Outer Cover Top & Bottom Fabric: 350GSM, **35% Tencel Lyocell**, 60% Polyester, 5% Spandex, Circular knit, Jacquard Pattern, off white color

Outer Cover Gusset: 170GSM, 100% Polyester, Double Mesh Knit, blue color

Inner Cover Fabric: 35GSM 100% Polyester, Knit white,

Inner Pillow: Three layers foam, Top and bottom **layer A Bio-based Foam, 900G** each, middle layers **B 40D memory foam** in the middle as attached 4CM each layer, total height 14CM

Outer Cover Style/Construction: 1/8" piping on all sides, 5CM gusset, overlock inside, "U" Shapped zipper on one short sdie.

Inner pillow Cover: Knife edge

Packing: Roll Packed into a brown box, then 6 pcs into a master carton box.

MOQ: 2000 pcs

Lead Time: 50 Days



Super Soft Gusset Bio-Based Foam Pillow



Outer Cover Top & Bottom Fabric: 280GSM, 98% Polyester, 2% Spandex, Circular knit, Jacquard Pattern, off white color
Outer Cover Gusset: 170GSM, 100% Polyester, Double Mesh Knit, blue color
Inner Cover Fabric: 75GSM 100% Polyester, Knit white,

Inner Pillow: **Bio-based Foam**

Cover Style/Construction: 1/8" piping on all sides, 5CM gusset, overlock inside, one long side centred sewn #3 nylon zipper
Inner pillow: Knife edge

Packaging: Flat packing into a printed brown re-shipper box

MOQ: 2000 pcs

Lead Time: 50 Days



Catalog Down & Feather Pillow



Outer Cover Fabric: 233TC, 100% Cotton, Plain, downproof, white 40x40/133x100

Inner Cover Fabric: 233TC, 100% Cotton, Plain, downproof, white 40x40/133x100

Inner Pillow Fill:

50x70CM: Top: 200G, 90% white goose down, 140GSM Latex particles, Bottom: 730G 100% White Goose Feather

50x75CM: Top: 210G, 90% white goose down, 150GSM Latex particles, Bottom: 780G, 100% White Goose Feather

Cover Style/Construction: 1/8" piping on all sides as attached.

Inner pillow: Knife edge

Packing: Vinyl bag with 1 insert card, 4 pcs per carton

